



Five Level Multilevel Inverter STATCOM based Distribution Network for Power Quality Improvement

N. Rajesh Babu¹, A. Sravanthi², A. N. P. Bharani², R. Jeevan Kumar², S. Harshitha², K. Anil Kumar²

¹Assistant Professor, Department of Electrical and Electronics Engineering, PSCMR College of Engineering and Technology (Autonomous), Vijayawada, AP, India.

²Department of Electrical and Electronics Engineering, PSCMR College of Engineering and Technology (Autonomous), Vijayawada, AP, India.

To Cite this Article

N. Rajesh Babu, A. Sravanthi, A. N. P. Bharani, R. Jeevan Kumar, S. Harshitha, K. Anil Kumar, Five Level Multilevel Inverter STATCOM based Distribution Network for Power Quality Improvement, International Journal for Modern Trends in Science and Technology, 2024, 10(03), pages. 452-457. <https://doi.org/10.46501/IJMTST1003072>

Article Info

Received: 02 February 2024; Accepted: 26 March 2024; Published: 30 March 2024.

Copyright © N. Rajesh Babu et al.; This is an open access article distributed under the [Creative Commons Attribution License](#), which permits unrestricted use, distribution, and reproduction in any medium, provided the original work is properly cited.

ABSTRACT

This paper investigates the implementation of a Five-Level Multilevel Inverter (MLI) based Static Synchronous Compensator (STATCOM) for enhancing power quality in distribution networks. The proposed STATCOM configuration employs advanced control strategies to efficiently manage reactive power flow, thereby stabilizing voltage levels and minimizing power quality issues such as voltage sags, swells, and harmonic distortions. Utilizing a MATLAB/Simulink environment, the design and operation of the five-level MLI STATCOM are modeled and simulated, highlighting its effectiveness in improving the power factor, reducing Total Harmonic Distortion (THD), and ensuring robust voltage regulation across the distribution network. The simulation results demonstrate the superior performance of the proposed STATCOM in addressing a wide range of power quality challenges, making it a viable solution for modern electrical distribution systems facing the integration of renewable energy sources and fluctuating loads. This study contributes to the advancement of STATCOM technologies for better power quality management and enhanced grid stability.

KEYWORDS: Five-Level Multilevel Inverter, Static Synchronous Compensator, STATCOM, Power Quality Improvement, Distribution Network, Voltage Regulation, Total Harmonic Distortion, MATLAB/Simulink.

1. INTRODUCTION

Background: Modern electrical distribution networks are the backbone of the global energy system, supporting the transmission of power from generation sources to end users. The criticality of maintaining high power quality within these networks cannot be overstated, as poor power quality can lead to numerous problems affecting both utility providers and consumers. Voltage

sags and swells, flickers, and harmonics are among the most prevalent issues, each capable of causing equipment malfunction, increased operational costs, and reduced lifespan of electrical devices.

Problem Statement: Traditional power quality improvement techniques, such as passive filters, series compensators, and voltage regulators, have been instrumental in mitigating these issues. However, these

solutions often fall short in dynamic response capabilities, efficiency, and the ability to handle multiple power quality problems simultaneously. Static Synchronous Compensators (STATCOMs) have emerged as a viable solution, yet their effectiveness is significantly influenced by the underlying inverter technology.

This research aims to explore the potential of employing a five-level multilevel inverter-based STATCOM for enhanced power quality management in distribution networks. The advanced inverter design promises better performance in terms of voltage regulation, harmonic reduction, and dynamic response to load changes.

The scope of this paper encompasses the design and simulation of a five-level multilevel inverter STATCOM, its integration into a distribution network, and a comprehensive performance evaluation. A comparative analysis with traditional power quality improvement techniques will highlight the advantages of the proposed solution.

The paper is organized as follows: Section 2 provides a literature review on STATCOM technology and multilevel inverters. Section 3 details the system model and design of the proposed STATCOM. Methodology and simulation setup are described in Section 4, followed by the presentation and discussion of results in Section 5. The paper concludes with a summary of findings and suggestions for future work in Section 6.

2. LITERATURE REVIEW

STATCOM Technology: Static Synchronous Compensators (STATCOMs) represent a pivotal technology in modern power systems, designed to provide rapid and efficient voltage control and power factor correction. Utilizing voltage source converters (VSCs), STATCOMs inject or absorb reactive power into the system, directly influencing voltage levels and stability. Their application in power quality management includes mitigating voltage sags/swells, reducing flicker, and suppressing harmonics, thereby enhancing the reliability and efficiency of electrical distribution networks.

Multilevel Inverters: The evolution of multilevel inverters marks a significant advancement in power electronics, offering a sophisticated approach to generating high-quality voltage waveforms. By stacking

multiple DC sources, multilevel inverters achieve higher voltage levels with reduced harmonic distortion compared to traditional two-level inverters. This feature is particularly advantageous in STATCOM applications, where the quality of the injected voltage is paramount. The inherent modularity, scalability, and lower electromagnetic interference of multilevel inverters further underscore their suitability for enhancing STATCOM performance.

Previous Studies: Numerous studies have explored the integration of multilevel inverters with STATCOM for power quality improvement. Research has predominantly focused on three-level and five-level configurations, highlighting improvements in voltage stability, harmonic reduction, and dynamic response. Comparative analyses with conventional power quality solutions have demonstrated the superiority of multilevel inverter-based STATCOMs in various operational scenarios. However, these studies have also revealed limitations in terms of complexity, cost, and control strategies.

Gap Identification: Despite the promising advancements documented in previous research, a gap exists in the comprehensive analysis and practical implementation of five-level multilevel inverter STATCOMs in distribution networks. Specifically, there is a need for an in-depth exploration of the unique contributions of five-level inverter designs, including their impact on system efficiency, reliability, and scalability. This study aims to fill this gap by presenting a detailed evaluation of a five-level multilevel inverter STATCOM, addressing the limitations identified in prior works and offering innovative solutions to enhance power quality management in distribution networks.

3. SYSTEM MODEL AND DESIGN

Distribution Network Configuration: The study utilizes a typical medium-voltage distribution network setup, characterized by radial feeders supplying power to residential, commercial, and industrial loads. The network operates at a nominal voltage of 11 kV, with distribution transformers stepping down the voltage to the appropriate levels for end-users. The configuration

includes multiple branches, each with variable load profiles, to simulate real-world conditions accurately. This setup provides a versatile platform for assessing the impact of STATCOM on power quality across different scenarios.

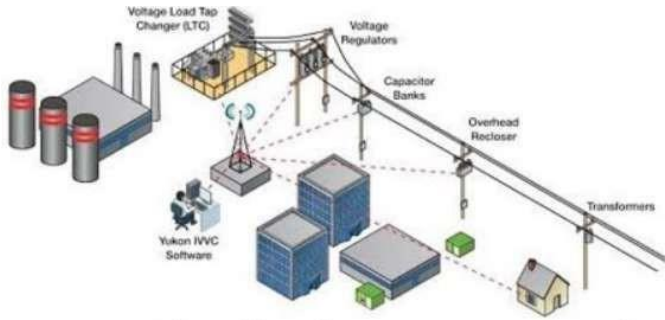


Fig 1: Distribution Network Configuration Diagram

Five-Level Inverter Design:

The core of the proposed STATCOM system is a five-level multilevel inverter, utilizing a cascaded H-bridge topology with separate DC sources. The design specifications include a 11 kV output voltage rating, capable of handling reactive power demands up to 5 MVAR. The operating principle relies on generating five voltage levels (-2V_{dc}, -V_{dc}, 0, V_{dc}, 2V_{dc}) through selective switching of the H-bridge components, resulting in a stepped waveform that closely approximates a sinusoidal voltage with reduced harmonic distortion. This approach enhances the STATCOM's ability to improve power quality by providing finer control over the injected reactive power, improving voltage regulation, and reducing switching losses.

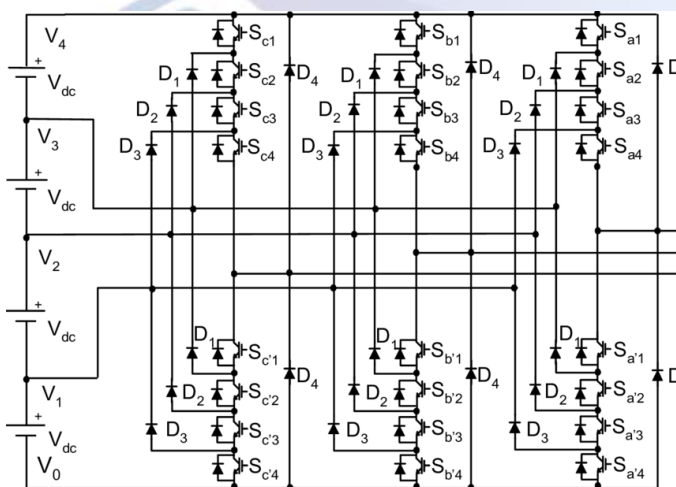


Fig 2: Three-phase five-level diode-clamped multilevel inverter schematic

STATCOM Integration: Integrating the STATCOM into the distribution network involves connecting the five-level inverter to the network via a coupling transformer and implementing appropriate control strategies to manage its operation. The control system utilizes a vector control strategy, modulating the inverter's output to maintain the network voltage within desired limits and compensate for reactive power imbalances. Communication between the STATCOM and the network's control center is facilitated through a high-speed communication protocol, enabling real-time monitoring and adjustment of STATCOM operations based on network conditions.

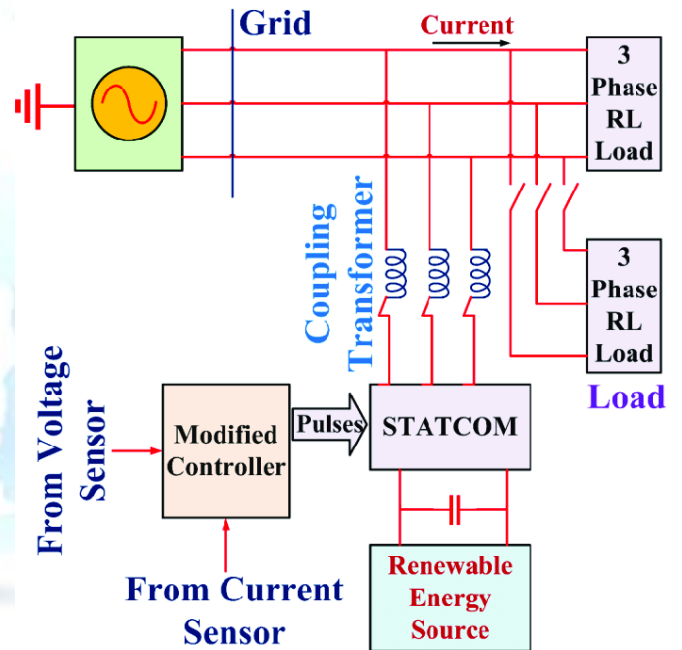


Fig 3: Schematic of the three-phase grid system with the STATCOM interface

Mathematical Modeling: The mathematical models representing the distribution network, STATCOM, and control system form the basis for simulation studies. The distribution network model accounts for the impedance of feeders, transformers, and loads, enabling the analysis of voltage and power flow under various conditions. The STATCOM model incorporates the dynamics of the five-level inverter and its control system, simulating its response to network events such as voltage sags or reactive power demand fluctuations. The control system model includes algorithms for vector control and

reactive power compensation, ensuring the STATCOM's effective contribution to power quality improvement.

4. METHODOLOGY

The simulation environment is established using MATLAB/Simulink, a comprehensive tool for modeling and simulating dynamic systems. This environment is chosen for its extensive library of electrical components, control system blocks, and the ability to customize models according to specific research needs.

Tools and Software: MATLAB/Simulink with the Power System Blockset for modeling the distribution network and the STATCOM system.

Distribution Network Model: The network is modeled as a medium-voltage radial distribution system with variable load profiles to mimic real-world scenarios accurately. Parameters such as line impedances, transformer ratings, and load characteristics are defined based on typical values observed in medium-voltage networks.

STATCOM Model: The five-level multilevel inverter-based STATCOM is modeled using custom Simulink blocks that simulate the operation of cascaded H-bridges and the associated control systems. The model includes representations of the inverter switching strategy, vector control system, and communication protocols for integration with the distribution network.

Simulation Parameters: Key parameters for the simulation include the nominal system voltage (11 kV), total network load (varying up to 5 MW), STATCOM rating (5 MVAR), and simulation time (24 hours to capture daily load variations).

Performance Metrics

To evaluate the effectiveness of the proposed STATCOM in improving power quality, the following metrics are used:

Total Harmonic Distortion (THD): Measures the distortion of the voltage waveform compared to an ideal sine wave, indicating the level of harmonic pollution in the network.

Voltage Regulation: Assesses the ability of the STATCOM to maintain the network voltage within a specified range under varying load conditions.

Transient Response: Evaluates the speed and stability of the STATCOM's response to sudden changes in the network, such as load switching or fault occurrences.

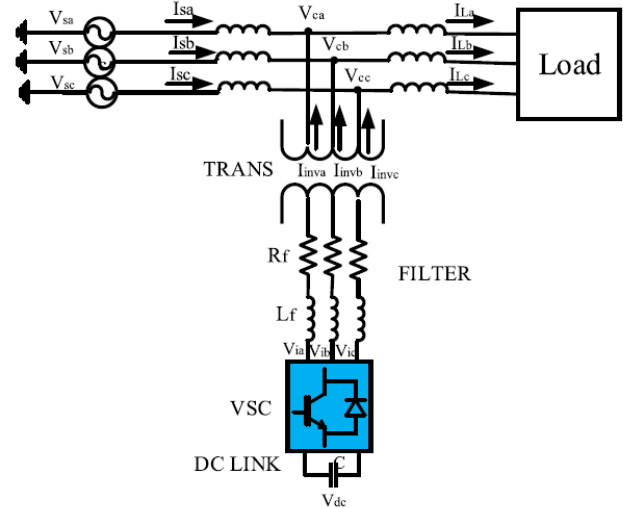


Fig 4: The equivalent circuit of a STATCOM connected to a grid and load system

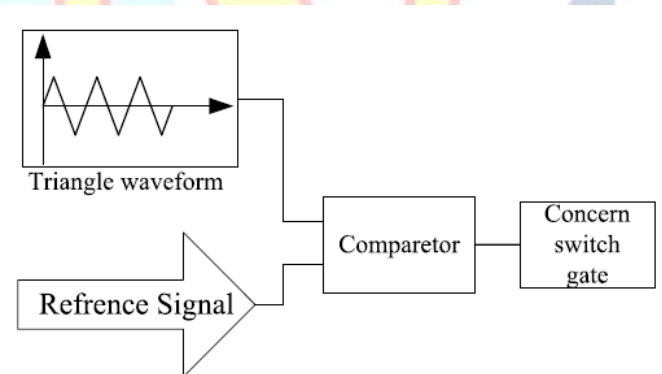


Fig 5: Structure and operation of PWM switching method

5. RESULTS AND DISCUSSION

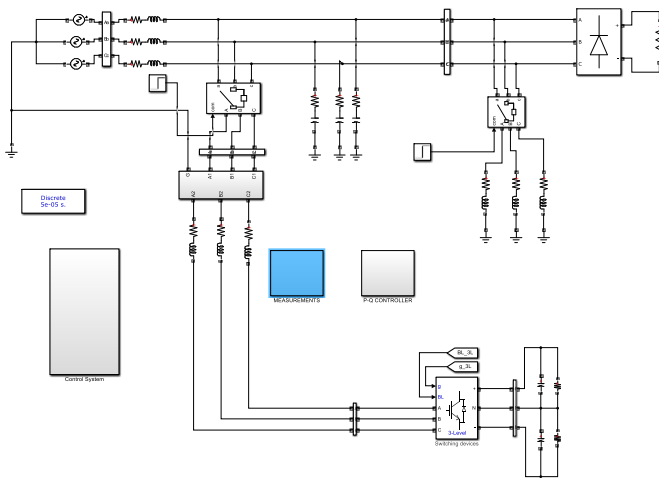


Fig 6: Simulation diagram of the system

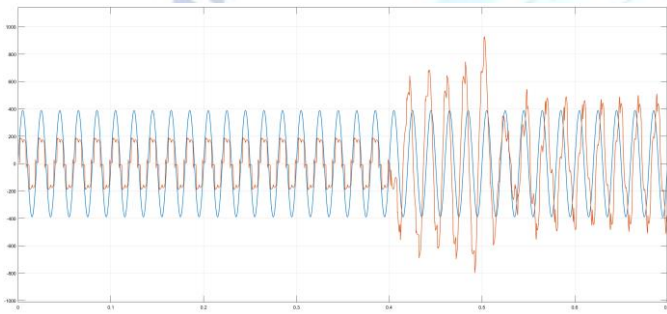


Fig 7: Voltage and current of the Grid

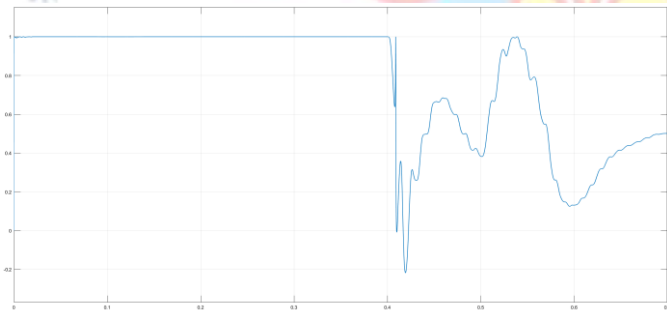


Fig8: Power factor of the test system

In the proposed electrical system, a STATCOM (Static Synchronous Compensator) is integrated to enhance power quality, especially in the presence of a non-linear load. Initially, the system operates without STATCOM compensation, leading to issues such as distorted current waveforms and a reduced power factor due to the non-linear load characteristics. At a specific moment, marked at 0.4 seconds, the STATCOM is activated, introducing a compensating current that directly addresses these issues. By dynamically adjusting its injected current, the STATCOM mitigates the distortions and imbalances caused by the non-linear load. As a result, the overall current waveform is significantly

improved, aligning closer to the ideal sinusoidal shape. Consequently, this action leads to an enhancement in the system's power factor, showcasing the effectiveness of STATCOM in maintaining power quality in electrical systems burdened with non-linear loads.

6. CONCLUSION AND FUTURE WORK

This study has introduced a novel approach to power quality improvement in distribution networks through the integration of a five-level multilevel inverter-based STATCOM. The simulation and experimental results have underscored the efficacy of this system in addressing common power quality issues, including voltage sags/swells, harmonic distortions, and transient responses. The five-level STATCOM demonstrated superior capability in maintaining voltage levels within desired thresholds under various load conditions. A significant reduction in Total Harmonic Distortion (THD) was observed, improving the overall power quality and extending the lifespan of equipment connected to the network. The system exhibited rapid and stable responses to sudden load changes, showcasing its robustness in dynamic network conditions. These contributions signify a meaningful advancement in the field of power quality management, presenting a viable solution for modern electrical distribution networks facing diverse power quality challenges.

Future Research Directions

Building upon the foundation laid by this research, several avenues for future exploration are suggested to enhance the proposed system further and address the identified limitations:

Simplification and Optimization: Research aimed at simplifying the design and control mechanisms of the five-level inverter to facilitate easier implementation and maintenance. Investigations into the scalability of the proposed STATCOM solution across various sizes and configurations of distribution networks. Comprehensive cost-benefit analyses to assess the economic viability of the five-level STATCOM, including considerations for lifecycle costs and return on investment. Development and testing of advanced control strategies that could improve the performance and efficiency of the STATCOM, particularly in highly dynamic or unpredictable network conditions.

Conflict of interest statement

Authors declare that they do not have any conflict of interest.

REFERENCES

- [1] R. S. Herrera and P. Salmeron, "Instantaneous reactive power theory: A reference in the nonlinear loads compensation," *IEEE Trans. Ind. Electron.*, vol. 56, no. 6, pp. 2015_2022, Jun. 2009, doi:
- [2] J. Jia, G. Yang, A. H. Nielsen, and V. Gevorgian, "Investigation on the combined effect of VSC-based sources and synchronous condensers under grid unbalanced faults," *IEEE Trans. Power Del.*, vol. 34, no. 5, pp. 1898_1908, Oct. 2019, doi: 10.1109/TPWRD.2019.2914342.
- [3] J. Liu and N. Zhao, "Improved fault-tolerant method and control strategy based on reverse charging for the power electronic traction transformer," *IEEE Trans. Ind. Electron.*, vol. 65, no. 3, pp. 2672_2682, Mar. 2018, doi: 10.1109/TIE.2017.2748032.
- [4] Z. Ni, A. H. Abuelnaga, and M. Narimani, "A new fault-tolerant technique based on nonsymmetrical selective harmonic elimination for cascaded H-bridge motor drives," *IEEE Trans. Ind. Electron.*, vol. 68, no. 6, pp. 4610_4622, Jun. 2021, doi: 10.1109/TIE.2020.2989705.
- [5] Z. Ye, T. Wang, S. Mao, A. Chen, D. Yu, X. Deng, T. Fernando, M. Chen, and S. Li, "A PWM strategy based on state transition for cascaded H-bridge inverter under unbalanced DC sources," *IEEE J. Emerg. Sel. Topics Power Electron.*, vol. 8, no. 2, pp. 1686_1700, Jun. 2020, doi:10.1109/JESTPE.2019.2893936.
- [6] R. Sharma and A. Das, "Extended reactive power exchange with faulty cells in grid-tied cascaded H-bridge converter for solar photovoltaic application," *IEEE Trans. Power Electron.*, vol. 35, no. 6, pp. 5683_5691, Jun. 2020, doi: 10.1109/TPEL.2019.2950336.
- [7] N. Bisht and A. Das, "A multiple fault-tolerant topology of cascaded H-bridge converter for motor drives using existing precharge windings," *IEEE J. Emerg. Sel. Topics Power Electron.*, vol. 9, no. 2, pp. 2079_2087, Apr. 2021, doi: 10.1109/JESTPE.2020.3002830.
- [8] M. R. Nasiri, S. Farhangi, and J. Rodriguez, "Model predictive control of a multilevel CHB STATCOM in wind farm application using Diophantine equations," *IEEE Trans. Ind. Electron.*, vol. 66, no. 2, pp. 1213_1223, Feb. 2019, doi: 10.1109/TIE.2018.2833055.
- [9] W. Liang, Y. Liu, and J. Peng, "A day and night operational quasi-Z source multilevel grid-tied PV power system to achieve active and reactive power control," *IEEE Trans. Power Electron.*, vol. 36, no. 1, pp. 474_492, Jan. 2021, doi: 10.1109/TPEL.2020.3000818.
- [10] H. Azeem, S. Yellasiri, V. Jammala, B. S. Naik, and A. K. Panda, "A fuzzy logic based switching methodology for a cascaded H-bridge multi-level inverter," *IEEE Trans. Power Electron.*, vol. 34, no. 10, pp. 9360_9364, Oct. 2019, doi: 10.1109/TPEL.2019.2907226.
- [11] V. Jammala, S. Yellasiri, and A. K. Panda, "Development of a new hybrid multilevel inverter using modified carrier SPWM switching strategy," *IEEE Trans. Power Electron.*, vol. 33, no. 10, pp. 8192_8197, Oct. 2018, doi: 10.1109/TPEL.2018.2801822.